

# 2007 SPEC HOME OF THE YEAR

## OVERALL WINNER – LIVING GREEN DESIGNER HOMES

SPEC HOME: UNDER \$150,000



### WINNER Project Home of NVEK Energy Efficient Home

Kurri Kurri is a single level home with 2 bedrooms, 1 bathroom, space saving laundry and outdoor living area. Design and sustainability are embraced by passive solar design, effective material use with visual diversity whilst providing an architectural contemporary feel with adaptable areas. The house provides an environmentally sustainable and affordable lifestyle whilst embracing the housing needs of a family in the 21st century.



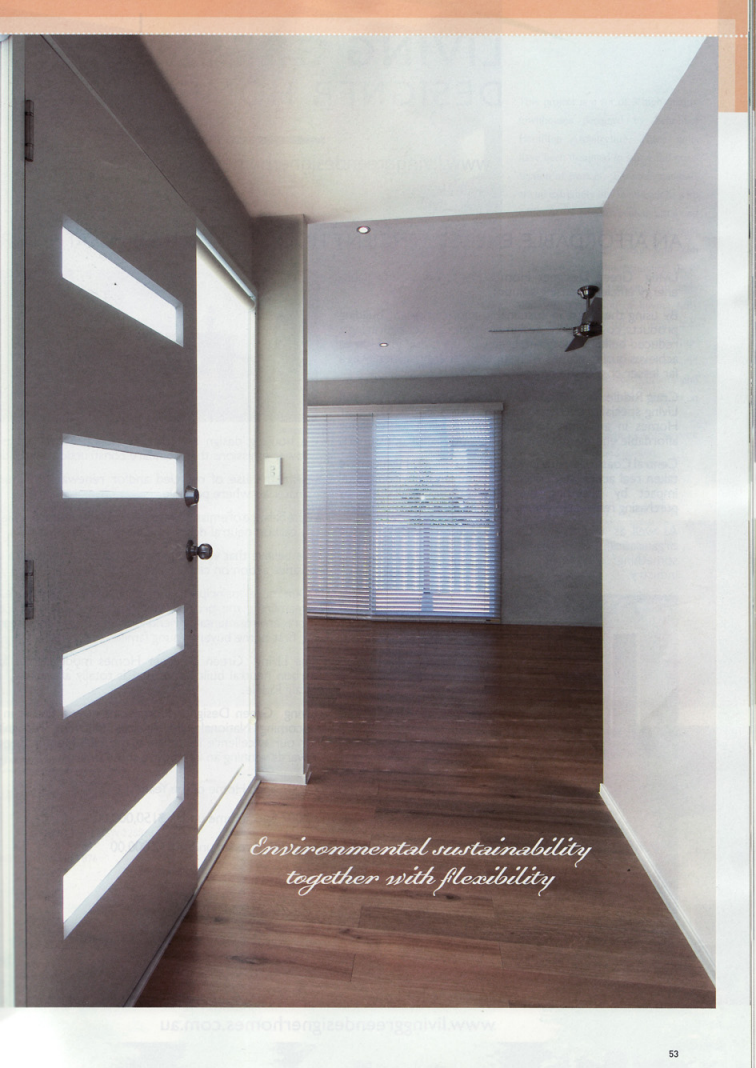
#### SPONSOR:



**BUILDER:** Living Green  
Designer Homes  
4 Bula Place  
Bensville NSW 2251

**PHONE:** 02 4368 2889





*Environmental sustainability  
together with flexibility*

# LIVING GREEN DESIGNER HOMES

PTY LTD

[www.livinggreendesignerhomes.com.au](http://www.livinggreendesignerhomes.com.au)

## AN AFFORDABLE, ENERGY EFFICIENT HOUSING SOLUTION THAT INSPIRES

Living Green Designer Homes Pty Ltd is an affordable, energy efficient housing solution.

By using the latest in sustainable and lightweight building products, cost efficient design principles and encouraging a reduced building footprint, Living Green Designer Homes achieves quality homes with superior energy efficiency at a far lesser cost than our competitors.

Craig Riddle, accredited HIA Greensmart and MBA Green Living specialist builder, established Living Green Designer Homes in an effort to pursue his passion for creating affordable energy efficient housing options for consumers.

Central Coast company Living Green Designer Homes have taken real action to reduce the company's environmental impact by offsetting the organisations emissions by purchasing renewable energy credits via Climate Friendly™.

As well as achieving a Climate Neutral™ status for the organisation, Living Green Designer Homes are bringing something completely revolutionary to the building industry



- a housing design and construction phase that has far lower emissions than standard construction methods
- with the use of recycled and/or renewable resourced materials where possible
- the balance of emissions are then offset therefore achieving a carbon neutral design and construction phase

We believe that we are extending the boundaries to take positive action on climate change.

"Our core principles and philosophy are simple. By streamlining the process, our housing solutions become more environmentally friendly as well as more accessible for first home buyers, young families and retirees.

The Living Green Designer Homes model allows for a carbon neutral built home that is totally affordable," said Craig Riddle.

Living Green Designer Homes are now a finalist in the upcoming National HIA Awards following recognition for our excellence in design at the HIA Hunter Regional Awards winning an impressive three awards:

- 2007 Spec Home of the Year
- 2007 Spec Home under \$150,000.00
- 2007 Bathroom under \$12,000.00



TO READ MORE ABOUT LIVING GREEN DESIGNER HOMES PLEASE VISIT OUR WEB SITE

[www.livinggreendesignerhomes.com.au](http://www.livinggreendesignerhomes.com.au)