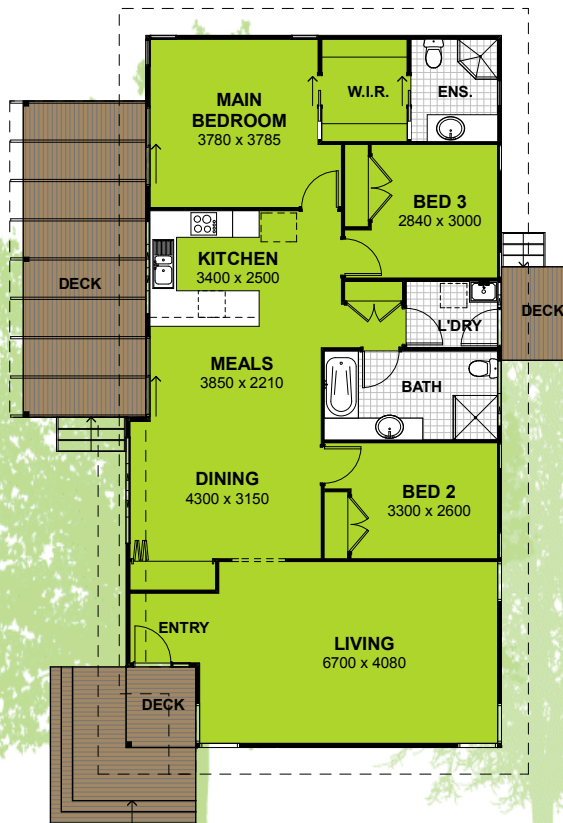




# DAINTREE



Artists Impression



### Areas m<sup>2</sup>

Living	128.6
Decks (optional)	31.0
<b>Total Area</b>	<b>159.6</b>
(optional pergola)	

- Affordability
- Design Efficiency
- Environmental Design Features
- Carbon Neutral Footprint
- Energy Efficiency
- Award Winning Construction

**LIVING GREEN**  
**DESIGNER HOMES**  
 PTY LTD

**STYLE & SUSTAINABILITY**



© 2009 Living Green Designer Homes Pty Ltd. All plans and images are for illustration purposes only. Living Green reserves the right to alter and change designs without notice. Bid. Lic. No. 35936 ABN 34098473271



Sales Enquiries: 02 4368 2889  
[livinggreendesignerhomes.com.au](http://livinggreendesignerhomes.com.au)